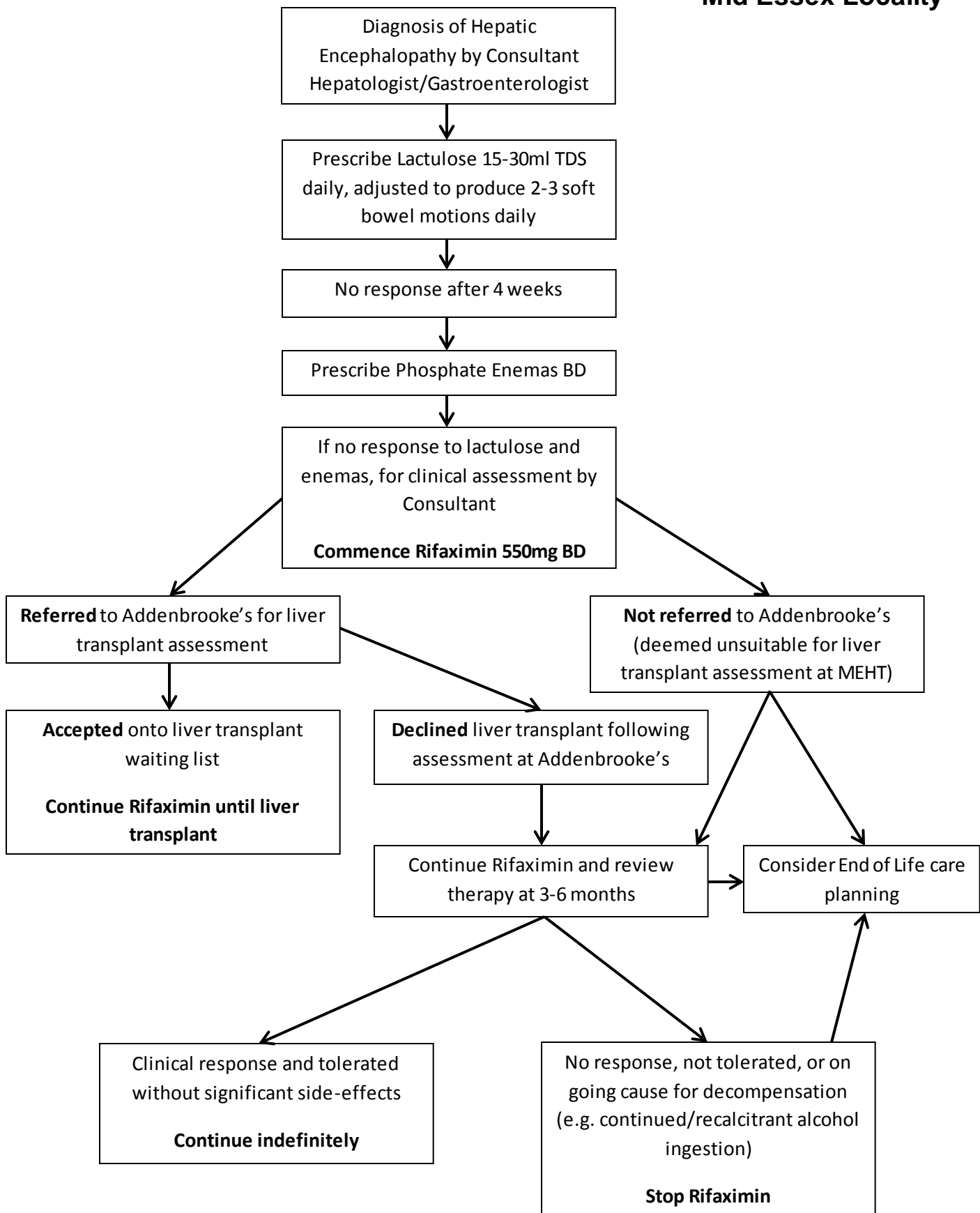


HEPATIC ENCEPHALOPATHY PATHWAY

Mid Essex Locality



HEPATIC ENCEPHALOPATHY PATHWAY

Mid Essex Locality

Document reference	HepaticEncephalopathyPAT201503v1.0final
Author	Dr Chirag Oza, Consultant Gastroenterologist & Hepatologist, Broomfield Hospital
Consulted with	n/a
Approved by	Mid-Essex Area Prescribing Committee
Date approved	Mar 2015
Next review date	Mar 2017

Previous version	Key changes
New document	n/a